



In This Issue

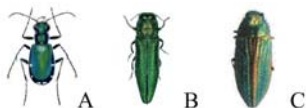
[Root Collar Excavation](#)
[New Addition to RTEC Team](#)
[RTEC Receives an Award](#)

RTEC Tree Trivia

This Issue's Question:

Emerald Ash Borer is an invasive species, highly destructive to Ash trees in its introduced range. Since its accidental introduction into the United States and Canada in the 1990s, and its subsequent detection in 2002, it has spread to 14 states and adjacent parts of Canada. Our area has been affected as well.

Which one of these is an Emerald Ash borer?



For a chance to win, email your name and answer to info@RTECtreecare.com

Last Month's Winner: Congratulations to Lisa of Arlington, who correctly answered that the Kiawe tree was originally from

TIP OF THE MONTH

Root Collar Excavation

Quite often tree problems start underground involving the root system. Signs that may indicate root problems include; mushrooms, decayed root flares, small foliage, reduced canopy growth, crown decline, reduced flower and fruit production. Planting too deep is a common problem that may weaken a tree and leave it more susceptible to secondary insect and disease problems. Girdling roots slowly cut off water and nutrient supply to the vital parts of a tree. They can also influence structural problems by suppressing lower trunk and root flare development. Girdling roots can be pruned to correct this problem in most cases. Root collars that have become buried with soil or mulch should be exposed to help prevent tree decline/mortality.

RTEC Treecare offers a Maintenance Root Collar Excavation service to correct these issues.



[Contact RTEC](#) if you suspect any of the above listed issues with your tree. We will be happy to dispatch a Certified Arborist to conduct a visual inspection of all your trees and shrubs and provide his recommendations.

Peru, Colombia and Ecuador.

Thank you to all those who participated and better luck in this month's trivia.

'Like' RTEC Treecare on Facebook.

[Find us on Facebook](#) 

RTEC INSIDER

New Addition to RTEC Team

Please welcome our newest member Mr. Ben Gotch. Ben is an ISA Certified Arborist and will serve as a Sales Arborist for clients requiring tree maintenance, plant health care, and tree preservation. He has a degree in Forest Resources Management from West Virginia University. He has also served our country in the United States Marine Corps. Ben was raised in Virginia and has also been an Arborist in New York. We are proud to have him as our newest member.



RTEC Receives an Award

On April 20, 2011, RTEC Treecare was recognized by **The Department of Homeland Security with a Small Business Achievement Award.** RTEC was one of 35 recipients chosen from thousands of small business that work with the Federal Government. RTEC provides tree maintenance, invasive plant control, tick control, reforestation, and an annual forestry management plan (FMP) for a 500 acre secure facility. RTEC's FMP helps the facility maintain the property's safety, security, environmental sustainability, green waste recycling, and management of the forest. The FMP also helped this facility win a Maryland Environmental Award. This is the second time that RTEC has been recognized with this award by the Department of Homeland Security.



[Forward email](#)



This email was sent to info@rtectreecare.com by info@rtectreecare.com | [Update Profile/Email Address](#) | Instant removal with [SafeUnsubscribe™](#) | [Privacy Policy](#).

RTEC TREECARE | 2828 Mary Street | Falls Church | VA | 22042

